

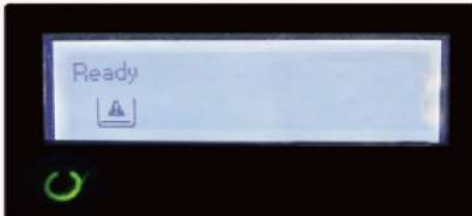
# READ ME FIRST

For use with CF258 CF289 series with used OEM chip

- Removed the used OEM chip and install the chip into the new replacement toner cartridge.



**Note:** After installing the cartridge, the printer will display a warning message, as in the photos shown below. Please note, the warning message will not interfere with the printing process, and you may disregard it.



**Note:** When printing, a pop-up warning message will be displayed on your computer screen. To disable the message, click the Snooze button and select "2 Months" from the dropdown menu. The message will be disabled for a selected period.

