

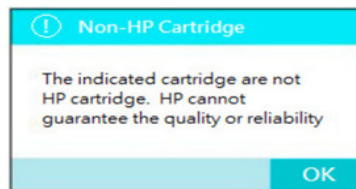
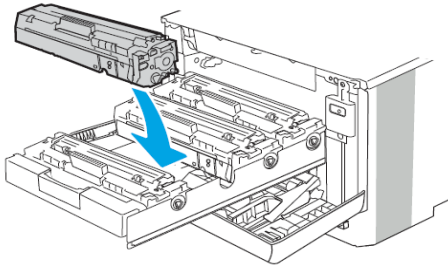
READ ME FIRST

For use with LaserJet Pro M454 printer series

Compatible W2020 color series with New Chip

Cartridge Installation

- Step 1: Make sure the power is turned on when replacing a new replacement toner cartridge
- Step 2: Install the new replacement cartridge into the printer and wait for 1-2 minute:
- Step 3: The LCD display should prompt the "**The indicated cartridge are Non-HP cartridge**" message, press **OK** to continue



SAY No to firmware update

Updating your printer firmware version or accepting new firmware update notifications from the OEM HP may stop you from using compatible cartridges. Turning off the automatic update setting on your printer and click "**No**" when receiving a new firmware update notification is the best way to protect your cartridges from any future firmware update issue.

How to disable Automatic Firmware Update on your printer

By turning off the automatic update setting on your printer, the printer will stop automatically downloading updates onto your printer and ask for permission before downloading any update.

- Step 1: Go to the Main page and select "**Setup**"
- Step 2: On the Setup manu screen, select "**Printer Maintenance**"
- Step 3: On the Printer Maintenance manu screen, select "**Update the Printer**"
- Step 4: On the Update the Printer manu screen, select "**Printer Update Options**"
- Step 5: On the Printer Update Options, select "**Do Not Check**"
Select "**No**" to continue
- Step 6: On the Printer Update Options, select "**Manage Updates**"
- Step 7: On the Manage Update screen, select "**Allow Updates**"
- Step 8: On the Allow Update screen, select "**No**" to continue
Select "**Confirm**" to continue
- Step 9: On the Manage Update screen, select "**Allow Downgrades**"
- Step 10: On the Allow Downgrades screen, select "**No**"

How to disable Automatic Firmware Update using Print Management Utility on your computer

- Step 1: Locate and click on **Setting** Icon
- Step 2: On the Setup screen, click on the "**Printer Maintenance**" option
- Step 3: On the Printer Maintenance screen, click on the "**Update the Printer**" option
- Step 4: On the Update the Printer screen, click on the "**Printer Update Options**"
- Step 5: On the Printer Update Options, click on "**Do Not Check**"
- Step 6: Select "**No**" to finish the firmware updating settings

- The Automatically Update feature on your printer and Print Management Utility is now turned off -