

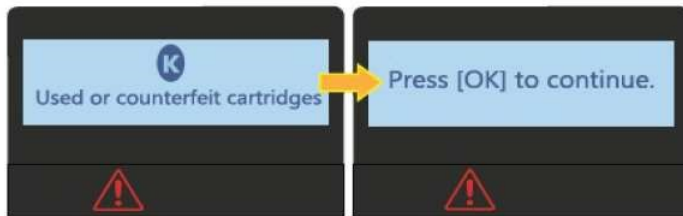
READ ME FIRST

For use with Compatible W1480 with Limited Function Chip solution

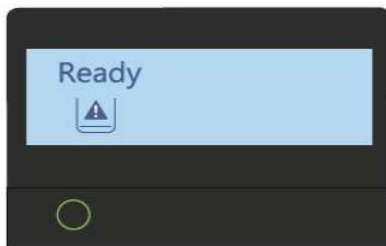
This version of the compatible toner cartridge with a limited function chip will not provide the user with toner level and page yield information.

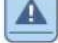
Updating your printer firmware version or accepting new firmware update notifications from the OEM HP may stop you from using compatible cartridges. Turning off the automatic update setting on your printer and click "No" when receiving a new firmware update notification is the best way to protect your cartridges from any future firmware update issue. Please follow the below instruction to disable auto firmware update.

Single-function Printer:



1. When install the cartridge for the first time, the printer will display above message. Press the "OK" button to continue.



2. The printer will display "Ready" with . This will not affect your print activities.



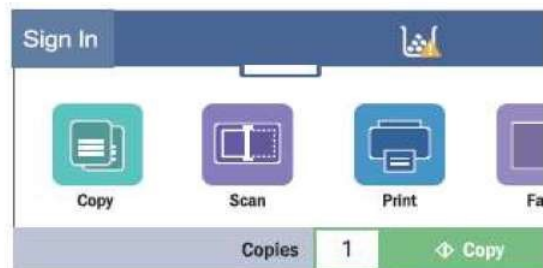
3. When requesting printing from a PC, it will prompt above message on the PC screen.

Click "Snooze" and select "2 Months" to disable the message for a selected period. Repeat the process every 2 months to disable the message.

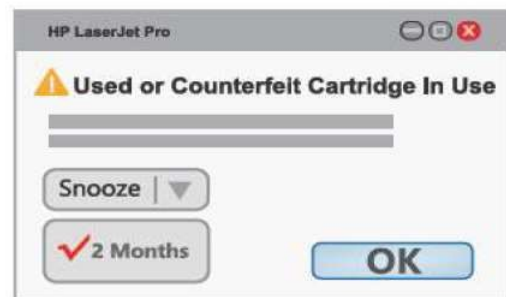
Multi-function Printer:



1. When install the cartridge for the first time, your printer will display above message. Press the "OK" button to continue.



2. The printer will display . This will not affect your print activities.



3. When requesting printing from a PC, it will prompt above message on the PC screen.

Click "Snooze" and select "2 Months" to disable the message for a selected period. Repeat the process every 2 months to disable the message.

Please replace the toner cartridge when the prints start to turn light or fade.

Instruction for disabling auto firmware upgrade

Updating your printer firmware version or accepting new firmware update notifications from the OEM HP may stop you from using compatible cartridges. Turning off the automatic update setting on your printer and click "No" when receiving a new firmware update notification is the best way to protect your cartridges from any future firmware update issue.

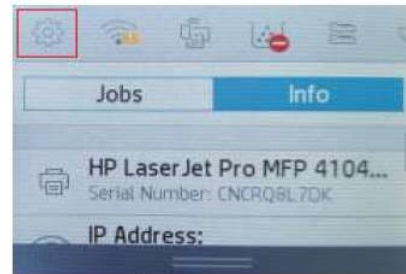
This product will not work with printer model ending in E (HP+) printer models

Single-function Printer:



1. Click "OK" button to access the Main Menu Setup
2. Click "OK" button to access the Setup Preferences
3. Click the left button three times to access the Setup Printer Maintenance Menu
4. Click "OK" and then click the left button twice to access the Update the Printer Menu
5. Click "OK" and the printer screen will display "All configured settings will be deleted and the original factory.."
6. Click "OK" and the printer screen will display "Update the Printer Check Now"
7. **Click the left button twice** and printer screen will displays "Update the Printer Update Options"
8. Click "OK" and printer screen will displays "Update Options Auto"
9. **Click the left button once** and printer screen will displays "Update Options Off"
10. Click "OK" and the printer screen will displays "Check for periodic updates is strongly recommended. Press.."
11. Click "X" button and the printer screen will displays "Update the Printer Update Options"
12. Click the right button once and the printer screen will display "Update the Printer Manage Updates"
13. Click "OK" and the printer screen will display "Manage Updates Allow Updates"
14. Click "OK" and then click the right button once, and the printer screen will display "Allow Updates No"
15. Click "OK" and the printer screen will display "Some printer features might not work properly. If updates.."
16. Click "OK" to disable Auto Update and the printer screen will display "Manage Updates Allow Updates"
Auto Update feature on your printer is now disable.

Multi-function Printer:



1. Select the "Setting Icon" to access the Setup Menu
2. Select the "Printer Maintenance" to access the Printer Maintenance Menu
3. Select the "Update the Printer" to access the Update the Printer Menu
4. Select the "Printer Update Options" to access the Update the Printer Menu
5. Select the "Do Not Check" to disable Auto Update
6. At this time, your printer will display message to advise the user to leave the auto update turn on. Select "No" to confirm disabling Auto Update.
7. Select the "Manage Updates" to access Manage Updates Menu
8. Select the "Allow Updates"
9. Select the "No" to disable Allow Update feature
10. At this time, a confirmation message will display, click "Confirm" to disable printer updates
11. Auto Update feature on your printer is now disable, Click Home button to return back to home screen

