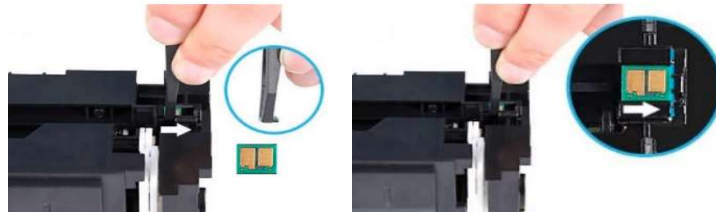


READ ME FIRST

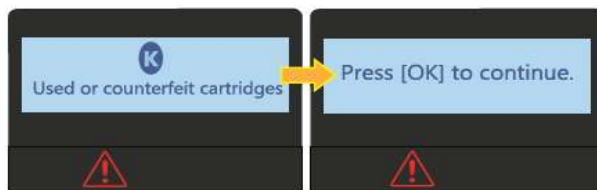
For use with W1480 with No Chip or Used OEM chip solution



Please use the tool provided to removed the used OEM chip from your used-up OEM cartridge.
Transfer the used OEM chip to the new replacement cartridge in the exact chip position as the OEM.

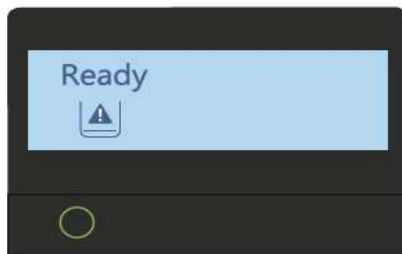
Single-function Printer:

Scenario 1

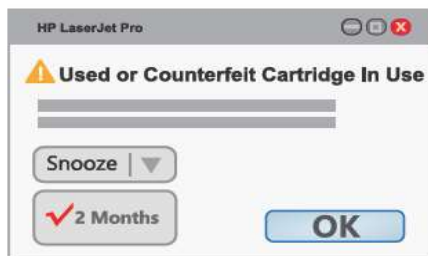


Messages Auto Switching

1. When the first time you install the cartridge, your printer will pop up the above messages. Press the "OK" button to continue.



2. When your printer displays "Ready", you can start to print. The printer screen will show  icon, but it will NOT affect printing



3. When request printing from a PC, it will prompt above message on the PC screen.

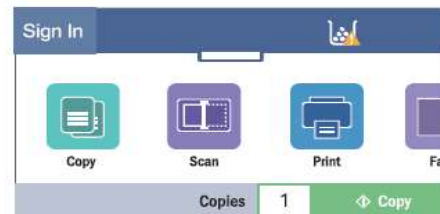
Click "Snooze" and select "2 Months" to hide it for 2 months. Repeat the "Snooze" every 2 months to get rid of the message.

Muti-function Printer:

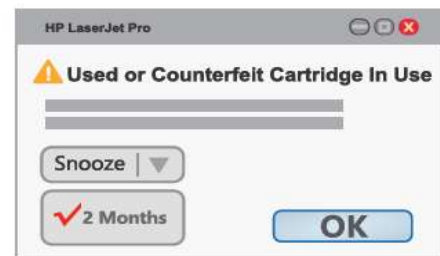
Scenario 2



1. When the first time you install the cartridge, your printer will pop up the above message. Press the "OK" button to continue.



2. The printer will show  icon, it will NOT affect printing. The printer is still ready, so you can start to print



3. When request printing from a PC, it will prompt above message on the PC screen.

Click "Snooze" and select "2 Months" to hide it for 2 months. Repeat the "Snooze" every 2 months to get rid of the message.

Please replace the toner cartridge when the prints start to turn light or fade.