

Counting Gear Reset Instruction

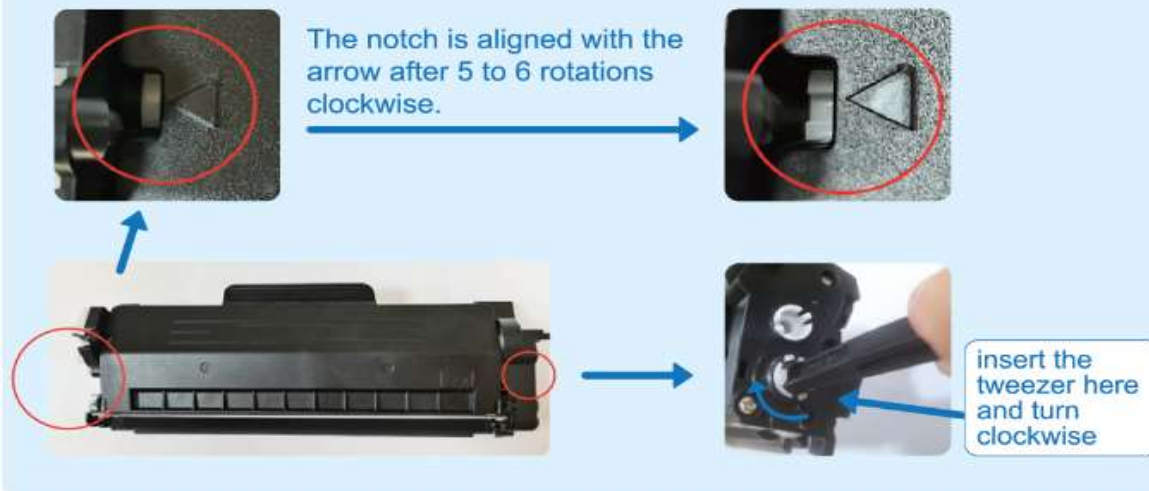
For use with Compatible Brother TN760 Jumbo Yield Toner Cartridge

The standard Brother TN760 High Yield toner cartridge is est. 3,000 page yield @ 5% text print coverage. You are require to rest the counter gear once the toner low indicator warning start to display on the printer.

Counter gear rest

STEP 1

- 1 Remove the toner cartridge from the machine, insert the wide end of the tweezers into the gear and rotate it clockwise about 5 to 6 turns until the notch is aligned with the arrow as shown below.



STEP 2

- 2 Pry the white part upward with the tweezers as shown below, and rotate it clockwise to the end.



- 3 The reset is finished, and now the toner cartridge is ready to be used again in the machine.

