

Counting Gear Reset Instruction

For use with Compatible Brother TN450 Jumbo Yield Toner Cartridge

The standard Brother TN450 High Yield toner cartridge is est. 2,600 page yield @ 5% text print coverage. You are require to rest the counter gear once the toner low indicator warning start to display on the printer.

Counter gear rest

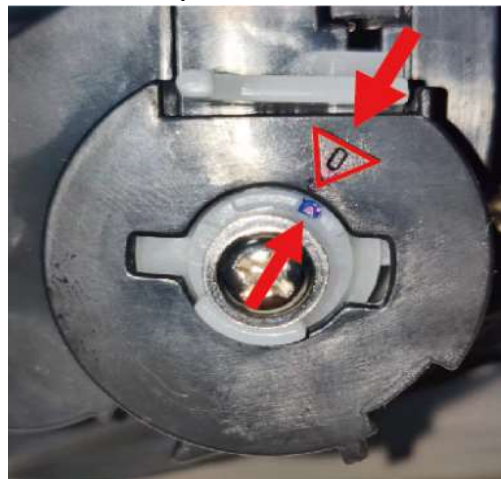
1. Remove the toner cartridge from the printer.
2. Press down and turn the white counter gear counterclockwise until the small groove aligns with the triangular mark on the toner. see Picture -01
3. Once the groove aligns with the triangular mark on the toner cartridge. You are now completed with counter gear reset and the cartridge is now good with another 2,600 page print. See Picture -02

Gear position at the end of page yield



Picture -01

Gear position after reset



Picture -02